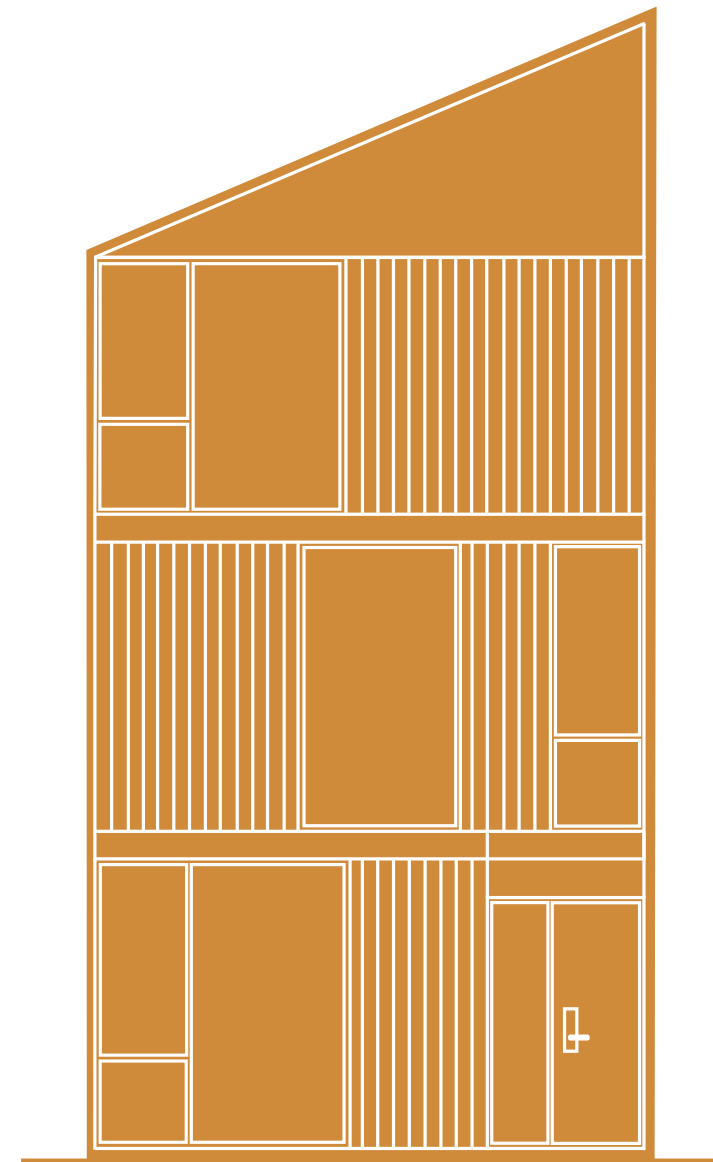


Terrace townhome

A ground level terrace and a balcony make this bright modern townhome a place to connect with friends, neighbours and the community.



Terrace townhome

A ground level terrace and a balcony make this bright modern townhome a place to connect with friends, neighbours and the community.



Artist interpretation.

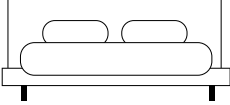
Terrace townhome

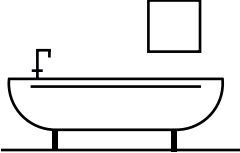
Features

Attention to design details and high build quality standards epitomize the townhomes of Unity Square and the Terrace townhome is no exception. The open plan kitchen with island connects seamlessly to the dining room and the 2nd floor balcony – ideal for entertaining. The large living room boasts large floor to ceiling windows providing you an elevated perspective of the front street scape. This townhome has three large bedrooms including a primary bedroom suite with full walk-in closet and double vanity ensuite. The bottom floor is fully finished with a family room, cloakroom and access to the double car garage.

 Living Space
1,800

 Floors
3

 Bedrooms
3

 Baths
2.5

 Garage
2

 Outdoor Spaces
2

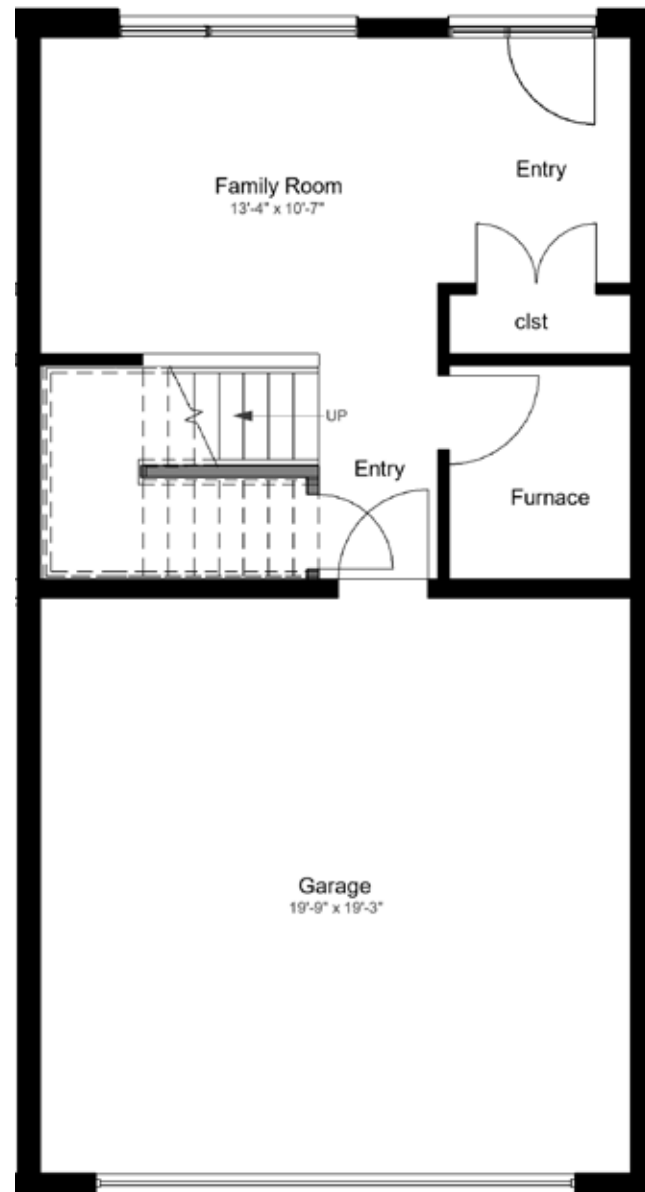


Terrace townhome

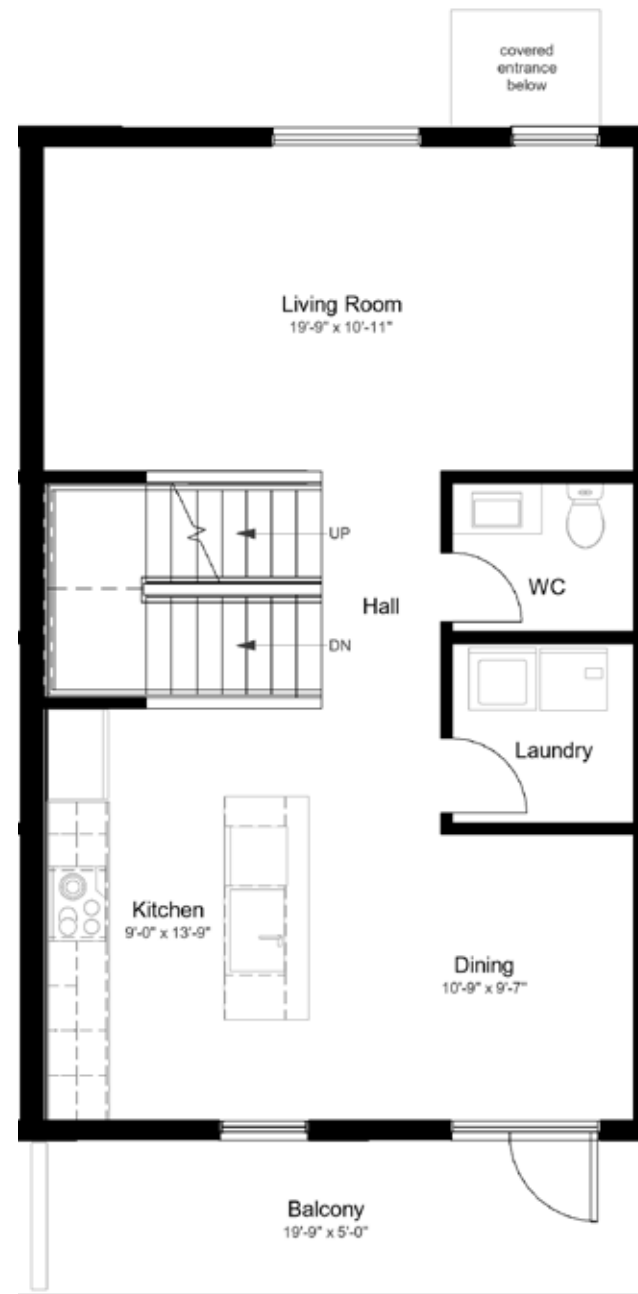
1800 sqft

Floor plans*

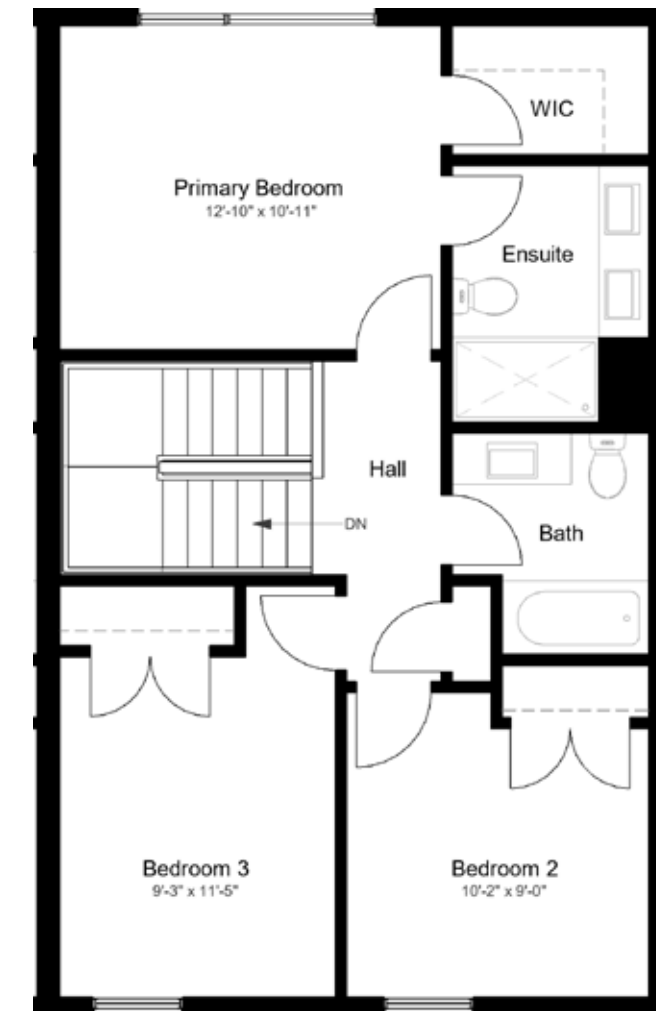
Lower Level



Main

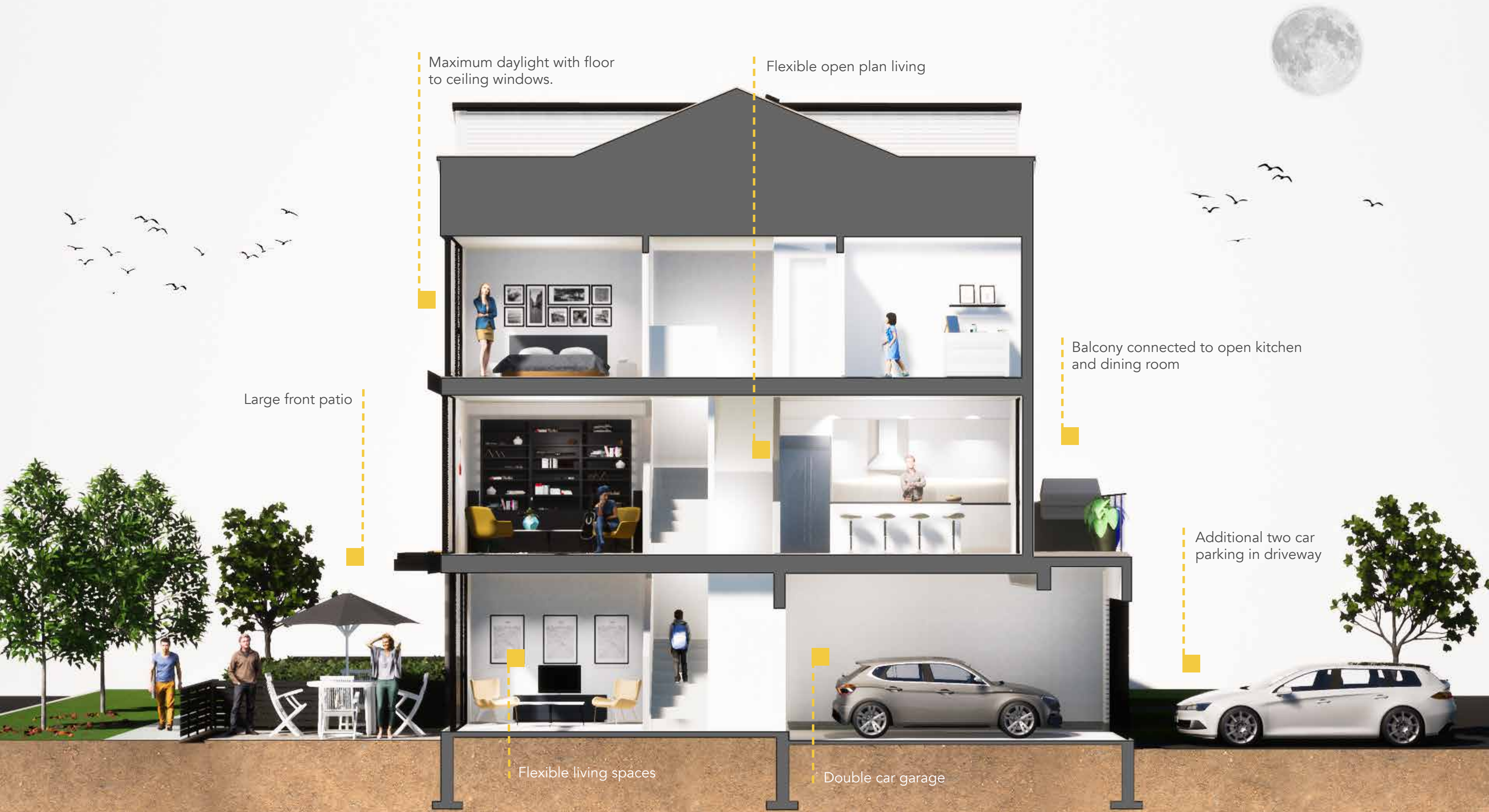


Upper Level



*Window size and placement may vary.

Terrace townhome



Maximum daylight with floor to ceiling windows.

Flexible open plan living

Large front patio

Balcony connected to open kitchen and dining room

Additional two car parking in driveway

Flexible living spaces

Double car garage

