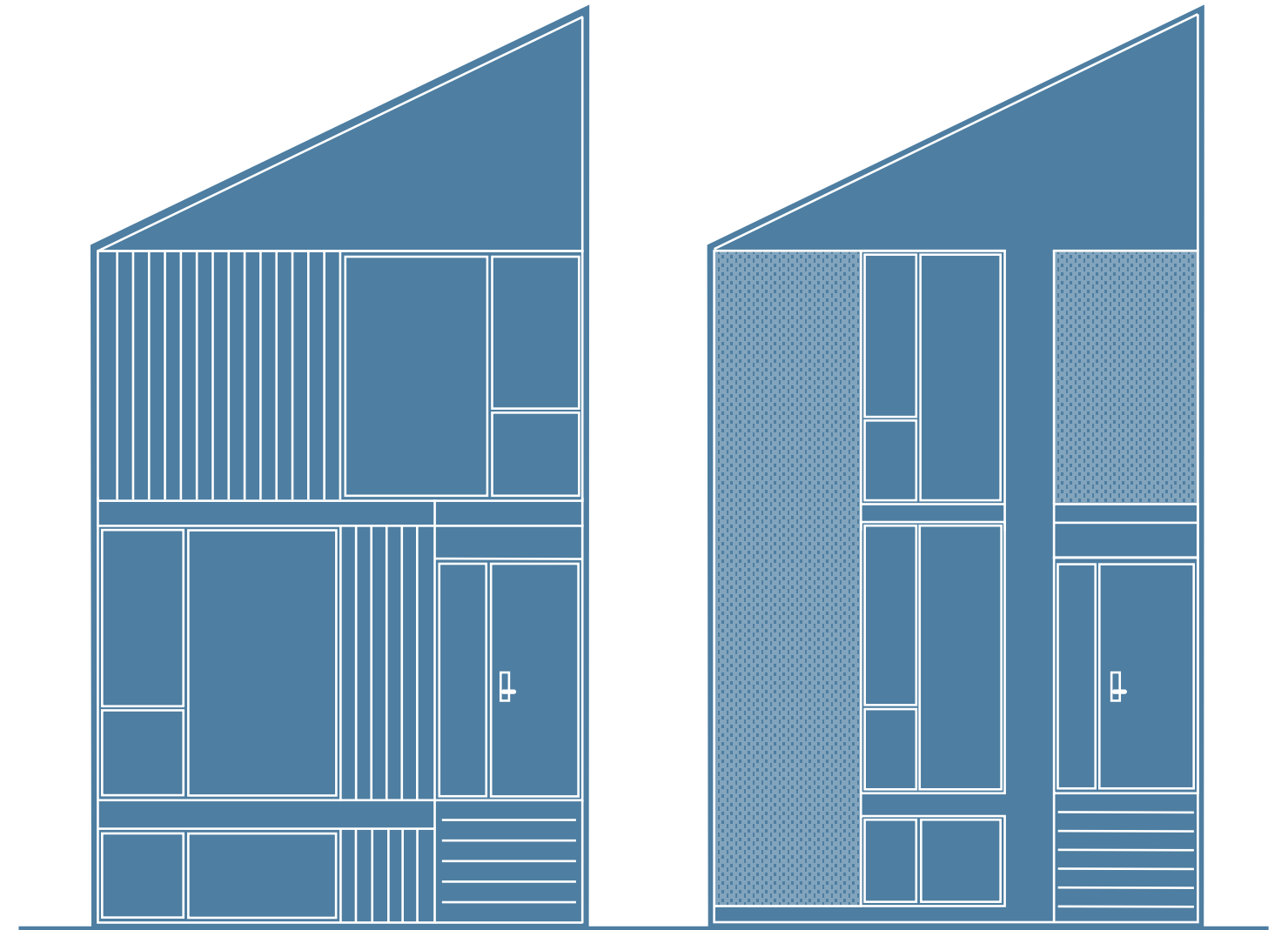


# Park townhome

Designed open living spaces bring the health benefits of natural daylight that flows through the entire home with floor to ceiling windows.



# Park townhome



Wood Exterior

Artist interpretation.

Artist interpretation.

# Park townhome

Expansive park views, raised patio and hidden double garage  
make this townhome truly special.

Masonry Exterior

Artist interpretation.

01

02

03

04

Artist interpretation.

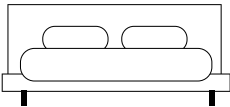
# Park townhome

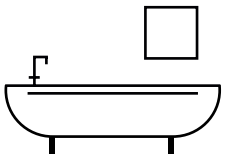
## Features

We can't say enough about the designed layout of this 2.5-storey townhome. True floor to ceiling windows maintain your connection to the world around you from both the front and rear of this townhome. This unique design incorporates a double car garage that is accessed from a hidden driveway below the large private raised deck maintaining an unobstructed view of the park. Open living spaces bring the health benefits of natural daylight that flows through the entire home. The kitchen includes an island and large dining area connecting directly to the raised patio overlooking the park. A double vanity ensuite and walk-in closet accompany the large primary bedroom. Two additional bedrooms include built-in closets that are perfect as bedrooms or multi-functional spaces. The fully finished basement includes a flexible living space, and washroom with access to the large double car garage.

 Living Space  
**1,800**

 Floors  
**2+1**

 Bedrooms  
**3**

 Baths  
**2.5**

 Garage  
**2**

 Outdoor Spaces  
**2**

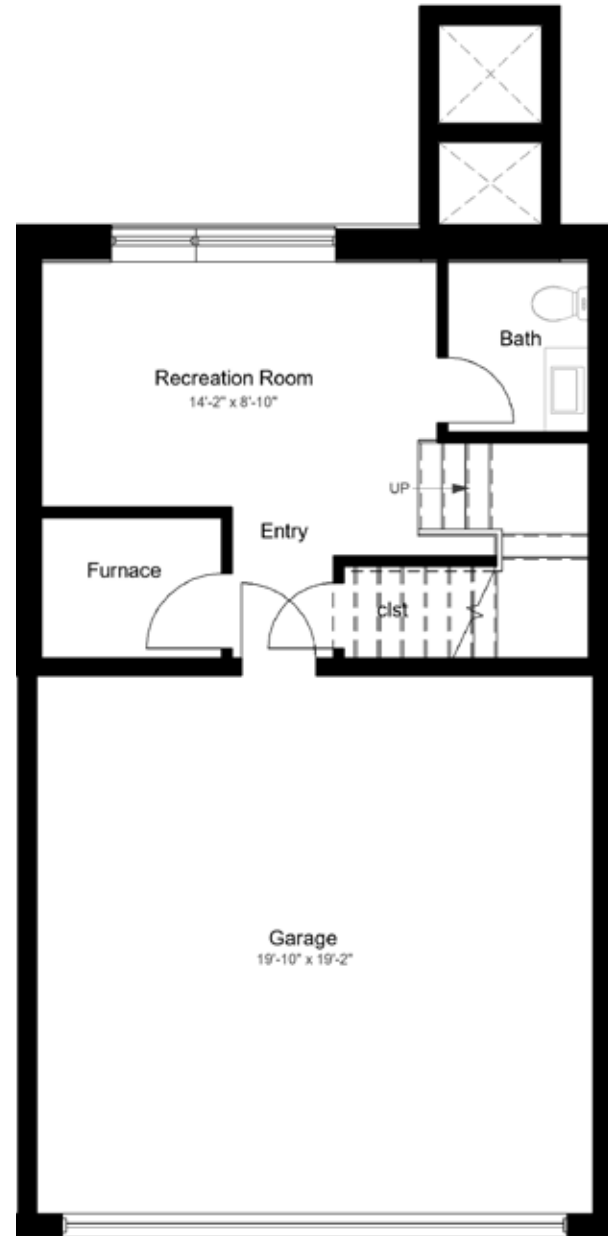


# Park townhome

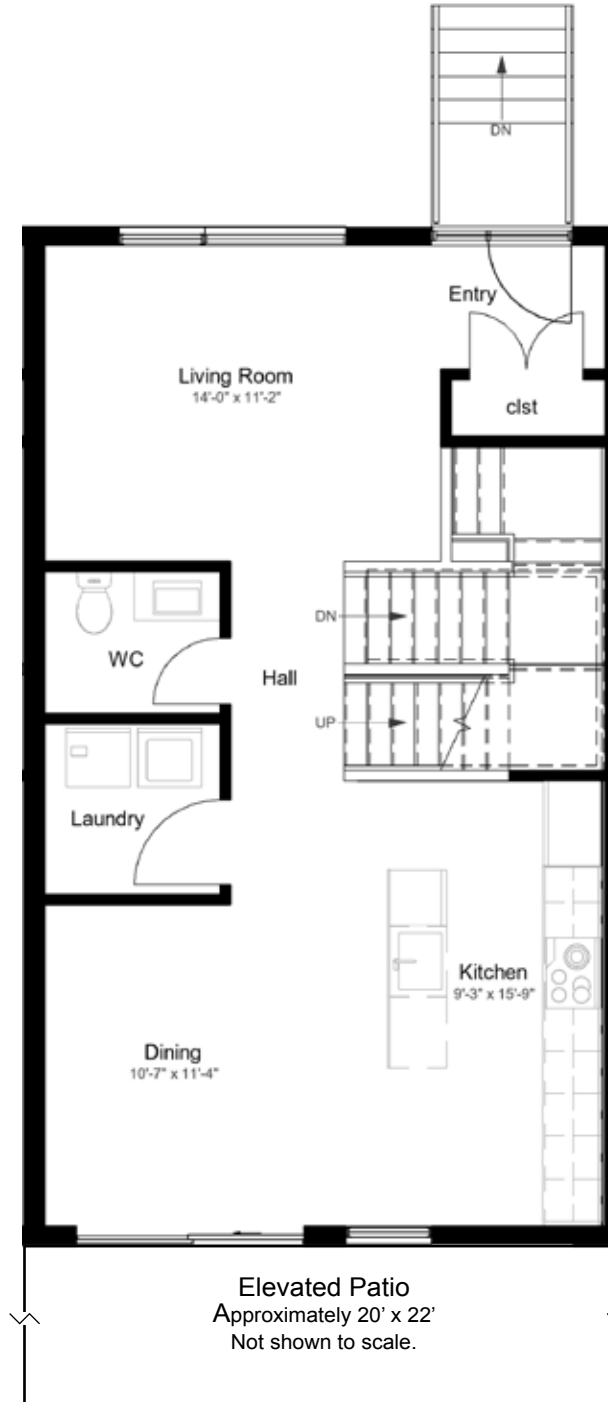
## Floor plans\*

1800 sqft\*\*

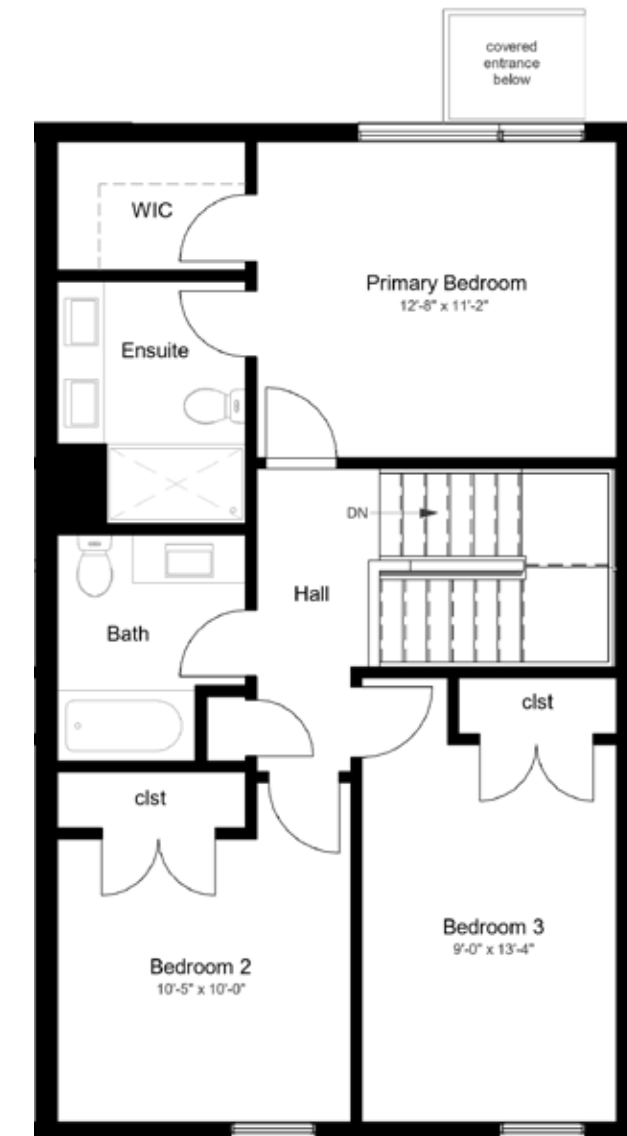
Lower Level



Main



Second



\* Same floor plan for both masonry and siding facade units. Window size and placement may vary.

\*\* Includes finished lower level.

# Park townhome



Solar tube ensures daylight enters the centre of the home.

True floor to ceiling windows maximizes daylight and maintains your connection to your surrounding environment.

Ground level living space.

400 sqft private patio overlooks green space.

Flexible living spaces.

Integrated double car garage accessed from within the home.

Semi-private covered drive aisle provides access to garage.

Large public green space.



Artist interpretation showing Park townhome patios overlooking one of the walkable green spaces in Unity Square.

